



## DATA SHEET

TRIADA-K LED extrusion – article number B4477

### Product characteristics

The three-channel recessed extrusion is made from high quality, double-anodized aluminum, designed for flexible or rigid LED strips that are 8 - 12 mm wide. One of the accessories offered for the extrusion are covers that shade and protect LEDs inside the profile. There are a few types of covers: cover K12 (frosted or transparent) or HS12 (frosted or transparent). Covers are made of polycarbonate, and additionally, HS12 covers are certified for excellent resistance to all weather conditions, UV radiation as well as being flame retardant.

Standard polypropylene end caps are used for the extrusion as supplementary accessories. End caps protect the extrusion from dust and other undesirable elements, which can make LED strips dirty and consequently deteriorate the lighting parameters.

The extrusion can be mounted to surfaces with the use of double-sided adhesive tape or mounting glue. Installation of the profile in drywall is performed using special KDU springs. LED fixture can also be assembled to be waterproof and has its ingress protection rating (describes the protection against the ingress of solids, dust and water) equal IP 67.

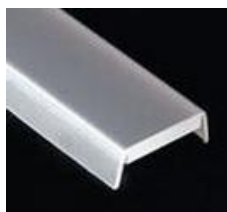
### Applications

The extrusion with LED light source is mostly used as interior lighting, especially to light cabinets, glass-cases, or as a decoration light for a niche in drywall ceilings. Due to the possibility of installing three strips inside the extrusion it can be used as a primary energy-efficient light source. IP 67 version can be also used as an outdoor lighting for elevations or architectural elements of gardens.

### Products related to the Extrusion



cover type K12  
frosted (00155)  
transparent (00156)



cover type HS12  
frosted (00157)  
transparent (00158)



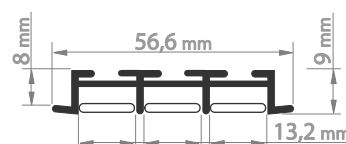
end cap  
without hole (000100)



spring KDU (00844)

### Technical specification

Ingress Protection Rating	IP 20 (standard), IP 67 (optional)
Available lengths	1 m / 2 m / 3 m* (can be cut to any size) *available by arrangement with the sales department of KLUŠ
Material	body – aluminum, cover – polycarbonate (PC), end cap – polypropylene (PP), spring – steel



[www.KlusDesign.eu](http://www.KlusDesign.eu)

\* Uprzejmie informujemy o zastrzeżeniu sobie prawa do zmian asortymentowych i modyfikacji produktów.  
We reserve the right to change and modify our products.

**KLUŠ**