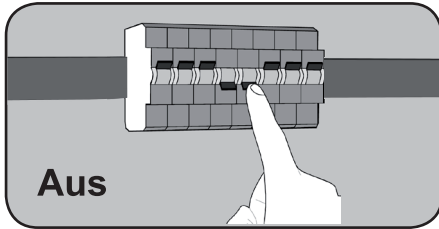
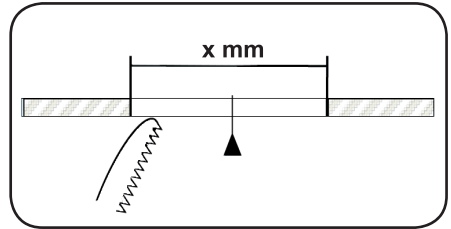


## Deckeneinbauleuchten

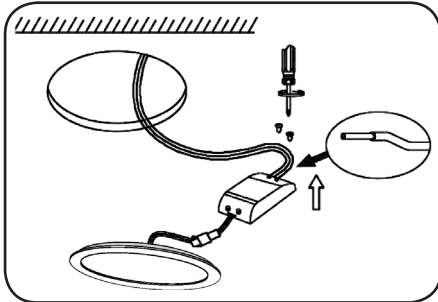
### Panel Serie



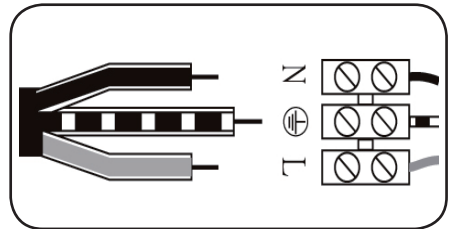
1. **Achtung! Für diese Arbeiten müssen Sie die Spannungsversorgung trennen.**




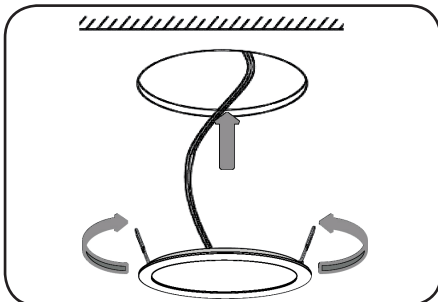
2. Sie benötigen einen Ausschnitt in der Decke. Bitte beachten Sie die Abmessungen der Leuchte.



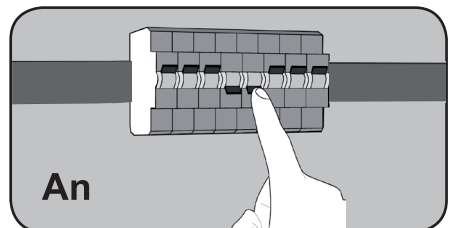
3. Verbinden Sie das Netzgerät mit der Spannungsversorgung. Achten Sie auf die Polung V+ und V-.



4. Anschluß an die Spannungsversorgung:  
**N = Blau •  = Gelb / Grün • L = Braun**



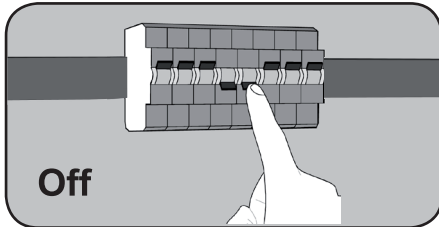
5. Installieren Sie die Leuchte in die Decke mit Hilfe der seitlichen Haltebügel.



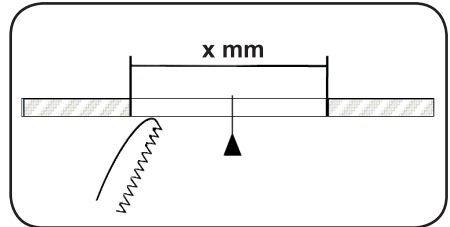
6. Schalten Sie die Spannungsversorgung wieder ein.

## Ceiling built lights

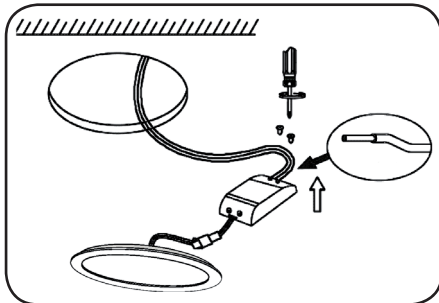
### Panel series



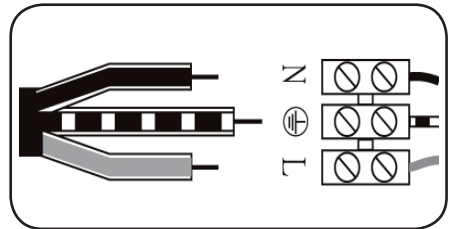
1. **Attention! For this work you must turn off the power supply.**



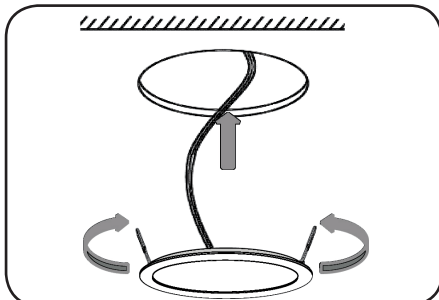
2. You need a cut in the ceiling. Please note the dimensions of the lamp.



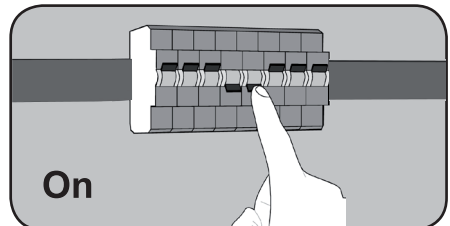
3. Connect the AC adapter to the power supply. Pay attention to the polarity of V + and V-.



4. Connection to the power supply:  
**N = Blue • PE = Yellow / Green • L = Brown**



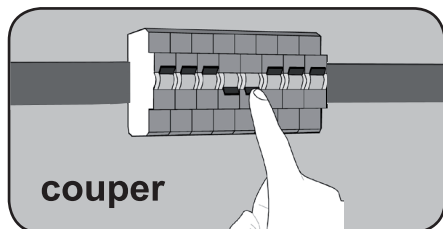
5. Install the lamp in the ceiling using the lateral retaining straps / clips.



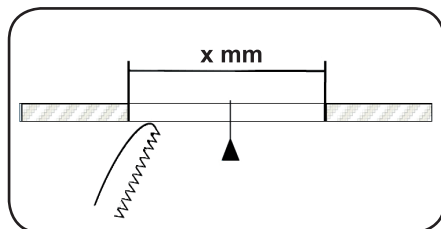
6. Turn on the power supply back on.

## Des plafonniers encastrés

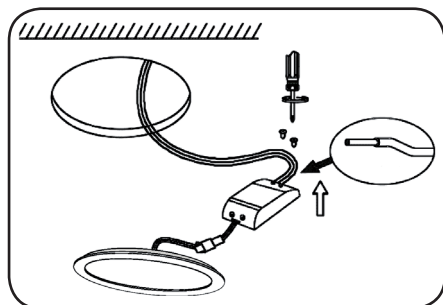
### Panneau Série



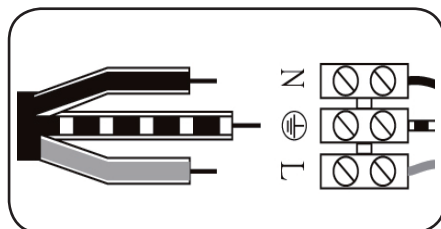
1. **Attention! Pour ce travail, vous devez couper l'alimentation électrique.**



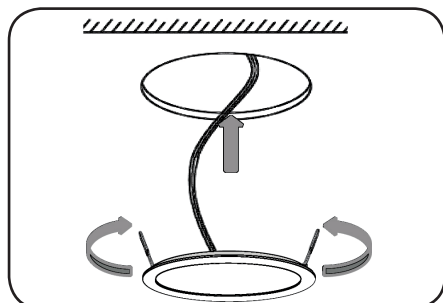
2. Vous avez besoin d'une coupe dans le plafond. Se il vous plaît noter les dimensions de la lampe.



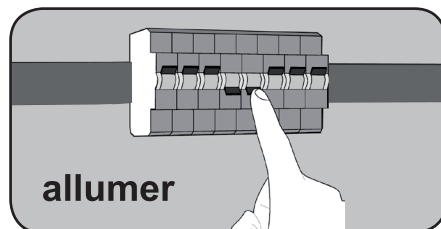
3. Branchez l'adaptateur secteur à l'alimentation électrique. Faites attention à la polarité de V + et V-.



4. Raccordement l'alimentation:  
N = Bleu • PE = Jaune / Vert • L = Brun



5. Installez la lampe au plafond à l'aide des sangles latérales de retenue / clips:



6. Allumez le bloc d'alimentation à nouveau.