



DATA SHEET

45-ALU LED extrusion – article number B4023 / B4023ANODA

Product characteristics

The angular extrusion is made from high quality aluminum (also available in a double-anodized version and lacquered in black RAL9005 and white RAL9010) is designed for flexible or rigid LED strips that are 8 - 10mm wide. One of the accessories offered for the extrusion are covers that shade and protect LEDs inside the profile. There are a few types of covers: cover K, KA-BIS, HS (frosted or transparent), LIGER (frosted matte) or clear focusing cover- S, thanks to which we can obtain a 10 degree light beam angle. Covers are made of polycarbonate, and additionally, HS covers are certified for excellent resistance to all weather conditions or UV radiation as well as being flame retardant. Standard polypropylene end caps and mounting brackets (made of steel, zinc or chrome finish) are used for the extrusion as supplementary accessories. End caps protect the extrusion from dust and other undesirable elements, which can make LED strips dirty and consequently deteriorate the lighting parameters. The extrusion can be mounted to surfaces with the use of double sided adhesive tape or mounting brackets. The mounting bracket guarantees easy and secure mounting of the extrusion to a desired surface. It can also work as connector between two extrusions. An integrated, straight line of light can be achieved by assembling the extrusion, densely spaced LEDs and frosted HS (minimum 140 LED per meter) cover or frosted matte LIGER (minimum 120 LED per meter) cover. The LED fixture can also be assembled to be waterproof with a level of IP 67. For mounting and power supply of extrusions the elements from the mounting system presented on www.KlusDesign.eu can be used.

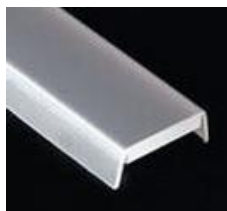
Applications

The extrusion with the LED light source is mostly used in interior lighting, especially to light cabinets, stairs, glass-cases, or as a decoration light for a niche in drywall ceilings. IP 67 versions can also be used as outdoor lighting for elevations or architectural elements of gardens.

Products related to the Extrusion



cover type K / KA-BIS
frosted (1547/17071)
transp. (1548/17072)
cover type LIGER
frosted matte (1547/17071)



cover type HS
frosted (1369)
transparent (1370)



cover type S
transparent (00220)



end cap
without hole (1383)
with hole (1440)



mounting bracket
zinc (1399)
chrome matt (1455)

Technical specification

Ingress Protection Rating

IP 20 (standard), IP 67 (optional)

Available lengths

1 m / 2 m / 3 m* (can be cut to any size)

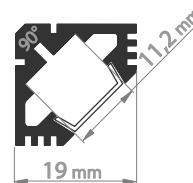
*available by arrangement with the sales department of KLUŚ

Material

body – aluminum, cover – polycarbonate (PC), end cap – polypropylene (PP), mounting bracket – steel



**sample item from the mounting system of extrusions



www.KlusDesign.eu

* Uprzejmie informujemy o zastrzeżeniu sobie prawa do zmian asortymentowych i modyfikacji produktów.
We reserve the right to change and modify our products.

KLUŚ